

Messrs. Bunion Electronic Co., Ltd.

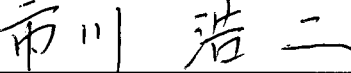

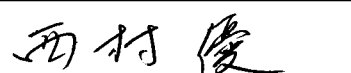
## Products Specification

Products name           COLOR TFT-LCD          

Type name           AA150XN02          

This products specification includes d/d(documents and drawings) in the below table.

item	d/d No.	Rev. No	Title of d/d	Number of Pages	Remarks
01	AA150XN02 - 02 - 02	--	AA150XN02 TECHNICAL SPECIFICATION	26	
02	AA150XN01 - 03	--	AA150XN** PACKAGING SPECIFICATION	5	
03	PRODUCTLABELE	H	PRODUCTS NUMBER LABELING FORMS	2	
04	AA150XN02 - 06	B	LAMP UNIT for 15.0"XGA ((AA150XN02,03,04)	10	
05					

Authorization for submission, (Jun.3, 2004)			
	Name	Title	Signature
Prepared	K.Ichikawa	Module Products Design & Planning	
Checked	T.Hatashita	Project Manager Module Products Design & Planning	
Approved	M.Nishimura	Manager Module Products Design & Planning	

(note 1) Three copies of this specification are submitted. Please return one copy with the receipt signature to us.

(note 2) When altering this specification, please consult us in advance and correct with red ink.

(note 3) In the case that we change applicable specifications, the revised specification shall be submitted for your receipt.

Specification Receipt			
Date	Name	Title	Signature

Products Specification	Rev. No.
ADPS - AA150XN02 - 01 - 02	--

# Revision Status for Products Specification

Products name COLOR TFT-LCD  
Type name AA150XN02

Rev.	Description	Rev.Date	Prepared	Checked
				Approved
First	First Revision	Jun.3,'04	K.Ichikawa	T.Hatashita M.Nishimura

Products Specification	Rev.No.
ADPS - AA150XN02 - 01 - 02	--

For Bunion Electronic Co., Ltd.

**15.0"XGA**

TECHNICAL SPECIFICATION

AA150XN02

**mitsubishi electric Corp.**

Date: Jun.3, '04

# CONTENTS

No.	Item	Page
--	COVER	1
--	CONTENTS	2
1	APPLICATION	3
2	OVERVIEW	4
3	ABSOLUTE MAXIMUM RATINGS	5
4	ELECTRICAL CHARACTERISTICS	5, 6, 7
5	INTERFACE PIN CONNECTION	8, 9, 10
6	INTERFACE TIMING	11, 12, 13, 14, 15
7	BLOCK DIAGRAM	16
8	MECHANICAL SPECIFICATION	17, 18
9	OPTICAL CHARACTERISTICS	19, 20
10	RELIABILITY TEST CONDITION	21
11	INSPECTION STANDARDS	22
12	HANDLING PRECAUTIONS FOR TFT-LCD MODULE	23, 24, 25
13	REVISION STATUS	26

# 1. APPLICATION

This specification applies to color TFT-LCD module, AA150XN02.

These specification papers are the proprietary product of Mitsubishi Electric Corporation ("MITSUBISHI") and include materials protected under copyright of MITSUBISHI. No part of this document may be reproduced in any form or by any means without the express written permission of MITSUBISHI.

MITSUBISHI does not assume any liability for infringement of patents, copyrights or other intellectual property rights of third parties by or arising from use of a product specified in this document. No license, express, implied or otherwise, is granted under any patents, copyrights or other intellectual property rights of MITSUBISHI or of others.

MITSUBISHI classifies the usage of the TFT-LCD module as follows. Please confirm the usage before using the product.

(1) Standard Usage

Computers, office equipment, factory automation equipment, test and measurement equipment, communications

(2) Special Usage

Transportation equipment(automobiles, ships, trains, etc.), medical equipment, safety equipment

(3) Specific Usage

Cockpit Equipment, military systems, aerospace equipment, nuclear reactor control systems, life support systems and any other equipment. MITSUBISHI should make a contract that stipulate apportionment of responsibilities between MITSUBISHI and our customer.

The product specified in this document is designed for "Standard Usage" unless otherwise specified in this document. If customers intend to use the product for applications other than those specified for "Standard Usage", they should contact MITSUBISHI sales representative in advance.

MITSUBISHI has been making continuous effort to improve the reliability of its products. Customers should implement sufficient reliability design of their application equipments such as redundant system design, fail-safe functions, anti-failure features.

MITSUBISHI assumes no responsibility for any damage resulting from the use of the product that does not comply with the instructions and the precautions specified in this document.

Please contact and consult a MITSUBISHI sales representative for any questions regarding this product.

## 2. OVERVIEW

AA150XN02 is 15.0" color TFT-LCD (Thin Film Transistor Liquid Crystal Display) modules composed of LCD panel, driver ICs, control circuit, and backlight unit.

By applying 6 bit or 8 bit digital data, 1024 × 768, 260K-color or 16.7M-color images are displayed on the 15.0" diagonal screen. Input power voltages are 3.3 V for LCD driving.

General specifications are summarized in the following table:

ITEM	SPECIFICATION
Display Area (mm)	304.1 (H) × 228.1 (V) (15.0-inch diagonal)
Number of Dots	1024 × 3 (H) × 768 (V)
Pixel Pitch (mm)	0.297 (H) × 0.297 (V)
Color Pixel Arrangement	RGB vertical stripe
Display Mode	Normally white TN
Number of Color	260K(6 bit/color ) 16.7M(8 bit/color )
Brightness	450 cd/m <sup>2</sup> ( Typ. )
Wide Viewing Angle Technology	Optical Compensation Film
Viewing Angle	-75~75° (H) -60~50° (V)
Surface Treatment	Anti-glare and hard-coating 3H
Electrical Interface	LVDS(6 bit/8 bit)
Optimum Viewing Angle(Contrast ratio)	6 o'clock
Module Size (mm)	326.0 (W) × 255.0 (H) × 15.9 (D)
Module Mass (g)	1310
Backlight Unit	CCFL, 4-tubes, edge-light, replaceable

Characteristic value without any note is typical value.

### 3. ABSOLUTE MAXIMUM RATINGS

ITEM	SYMBOL	MIN.	MAX.	UNIT
Power Supply Voltage for LCD	VCC	0	4.0	V
Logic Input Voltage	VI	-0.3	VCC+0.3	V
Lamp Voltage	VL	0	2500	Vrms
Lamp Current	IL	0	10.0	mArms
Lamp Frequency	FL	--	100	kHz
Operation Temperature(Panel) <small>Note 1,2)</small>	T <sub>op</sub> (Panel)	-20	70	°C
Operation Temperature(Ambient) <small>Note 2)</small>	T <sub>op</sub> (Ambient)	-20	70	°C
Storage Temperature <small>Note 2)</small>	T <sub>stg</sub>	-20	70	°C

[Note]

1) Measured at the center of active area and at the center of panel back surface

2) Top, Tstg ≤ 40°C : 90%RH max. without condensation

Top, Tstg > 40°C : Absolute humidity shall be less than the value of 90%RH at 40°C without condensation.

### 4. ELECTRICAL CHARACTERISTICS

(1) TFT- LCD

Ambient Temperature : Ta = 25°C

ITEM	SYMBOL	MIN.	TYP.	MAX.	UNIT	Remarks
Power Supply Voltages for LCD	VCC	3.0	3.3	3.6	V	*1)
Power Supply Currents for LCD	ICC	--	410	700	mA	*2)
Permissible Input Ripple Voltage	VRP	--	--	100	mVp-p	VCC = +3.3 V

\*1) Power and signals sequence:

$$0.5 \leq t1 \leq 10 \text{ ms}$$

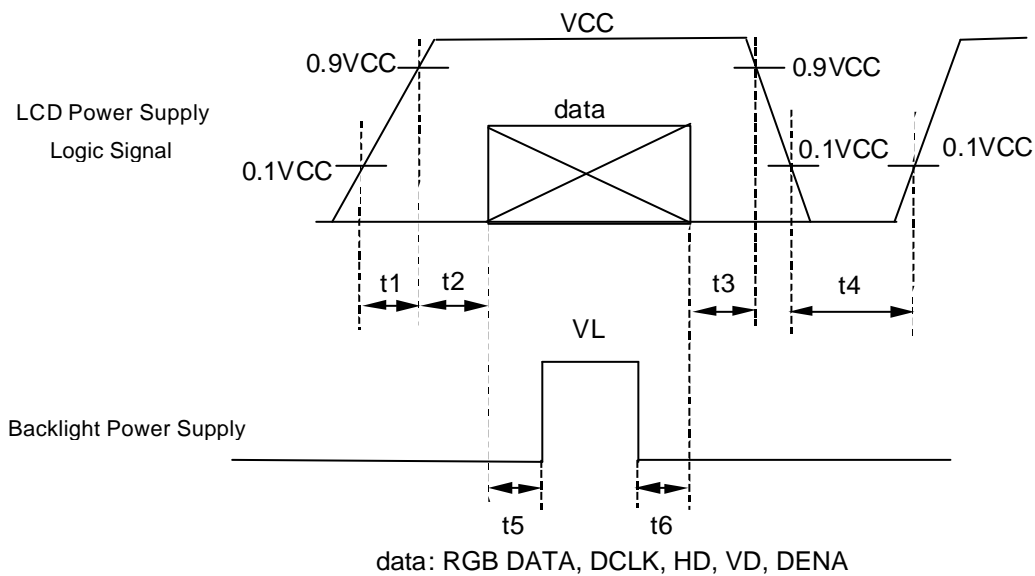
$$500 \text{ ms} \leq t4$$

$$0 \leq t2 \leq 50 \text{ ms}$$

$$200 \text{ ms} \leq t5$$

$$0 < t3 \leq 50 \text{ ms}$$

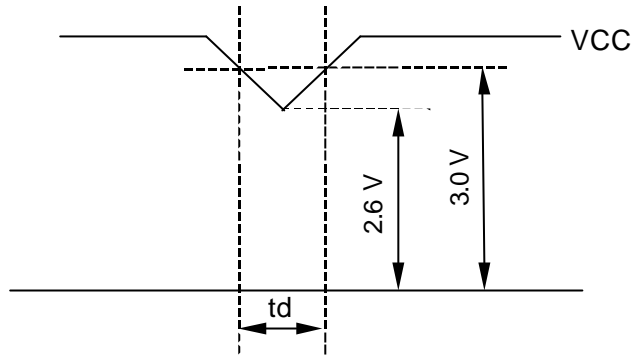
$$0 \leq t6$$



VCC-dip conditions:

- 1) When  $2.6\text{ V} \leq VCC < 3.0\text{ V}$ ,  $t_d \leq 10\text{ ms}$
- 2) When  $VCC < 2.6\text{ V}$

VCC-dip conditions should also follow the power and signals sequence.



\*2) Typical current condition:

64-gray-bar-pattern(6 bit)

256-gray-bar-pattern(8 bit)

768 line mode

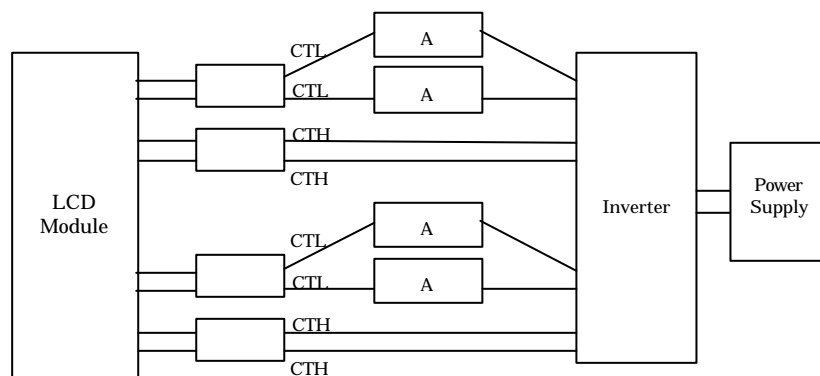
$VCC = +3.3\text{ V}$ ,  $f_H = 48.4\text{ kHz}$ ,  $f_V = 60\text{ Hz}$ ,  $f_{CLK} = 65\text{ MHz}$

(2) Backlight

$T_a = 25^\circ\text{C}$

ITEM	SYMBOL	MIN.	TYP.	MAX.	UNIT	Remarks
Lamp Voltage	VL	--	620	--	Vrms	$I_L = 6.5\text{ mArms}$
Lamp Current	IL	3.5	6.5	8.0	mArms	*1)*4)
Lamp Frequency	FL	40	--	70	kHz	*2)
Starting Lamp Voltage	VS	1650	--	--	Vrms	$T_a = -20^\circ\text{C}$
		1300	--	--	Vrms	$T_a = 25^\circ\text{C}$
Lamp Life Time	LT	50000	--	--	h	*3), $I_L = 6.5\text{ mArms}$ , Continuous Operation

\*1) Lamp Current measurement method (The current meter is inserted in low voltage line.)



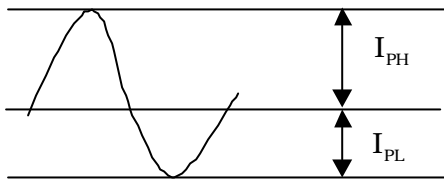
\*2) Lamp frequency of inverter may produce interference with horizontal synchronous frequency, and this may cause horizontal beat on the display. Therefore, please adjust lamp frequency, and keep inverter as far from module as possible or use electronic shielding between inverter and module to avoid the interference.

\*3) Lamp life time is defined as the time either when the brightness becomes 50% of the initial value, or when the starting lamp voltage does not meet the value specified in this table.

\*4) Please use the inverter which has symmetrical current wave form as follows,

The degree of unbalance: less than 10%

The ratio of wave height: less than  $\sqrt{2} \pm 10\%$



$I_{PH}$ : High side peak

$I_{PL}$ : Low side peak

The degree of unbalance =  $|I_{PH} - I_{PL}| / I_{rms} \times 100(\%)$   
The ratio of wave height =  $I_{PH}(\text{or } I_{PL}) / I_{rms}$

CURRENT WAVE FORM

## 5. INTERFACE PIN CONNECTION

(1) CN 1(Interface Signal)

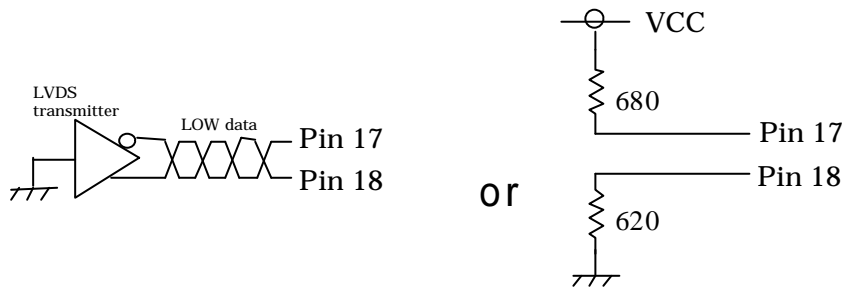
Used Connector: DF14H-20P-1.25H(HIROSE)

Corresponding connector: DF14-20S-1.25C(HIROSE)

Pin No.	Symbol	Function(ISP 6 bit compatibility mode)		Function(ISP 8 bit compatibility mode)
		6 bit input	8 bit input	
1	VCC	+3.3 V Power supply		←
2	VCC	+3.3 V Power supply		←
3	GND	GND		←
4	GND	GND		←
5	Link 0-	R0, R1, R2, R3, R4, R5, G0	R2, R3, R4, R5, R6, R7, G2	R0, R1, R2, R3, R4, R5, G0
6	Link 0+	R0, R1, R2, R3, R4, R5, G0	R2, R3, R4, R5, R6, R7, G2	R0, R1, R2, R3, R4, R5, G0
7	GND	GND		←
8	Link 1-	G1, G2, G3, G4, G5, B0, B1	G3, G4, G5, G6, G7, B2, B3	G1, G2, G3, G4, G5, B0, B1
9	Link 1+	G1, G2, G3, G4, G5, B0, B1	G3, G4, G5, G6, G7, B2, B3	G1, G2, G3, G4, G5, B0, B1
10	GND	GND		←
11	Link 2-	B2, B3, B4, B5, HD, VD, DENA	B4, B5, B6, B7, HD, VD, DENA	B2, B3, B4, B5, HD, VD, DENA
12	Link 2+	B2, B3, B4, B5, HD, VD, DENA	B4, B5, B6, B7, HD, VD, DENA	B2, B3, B4, B5, HD, VD, DENA
13	GND	GND		←
14	CLKIN-	Clock -		←
15	CLKIN+	Clock +		←
16	GND	GND		←
17	Link3-	See: *2)	R0, R1, G0, G1, B0, B1	R6, R7, G6, G7, B6, B7
18	Link3+	See: *2)	R0, R1, G0, G1, B0, B1	R6, R7, G6, G7, B6, B7
19	MODE	L=ISP 6 bit compatibility mode		H=ISP 8 bit compatibility mode
20	SC	Reverse scan control ( L : Normal , H : Reverse )		←

\*1) The shielding case is connected with GND

\*2) Recommended wiring of Pin 17,18 (6 bit input)



(2) CN 2,4(Backlight)

Backlight-side connector: BHSR-02VS-1(JST)

Inverter-side connector: SM02B-BHSS-1-TB

Pin No.	Symbol	Function
1, 2	CTH	VBLH ( High Voltage )

[Note] VBLH-VBLL = VL

(3) CN 3,5(Backlight)

Backlight-side connector: BHR-02VS-1(JST)

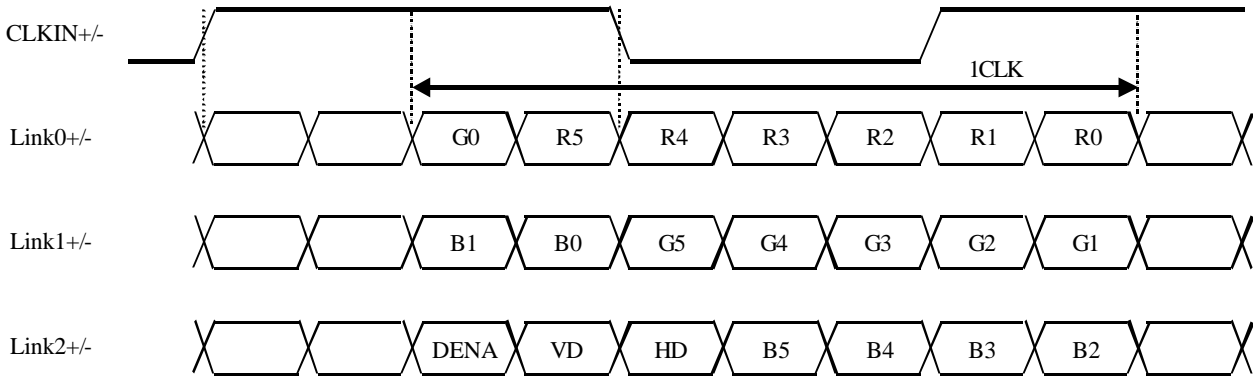
Inverter-side connector: SM02(4.0)B-BHS-1-TB

Pin No.	Symbol	Function
1, 2	CTL	VBL ( Low Voltage )

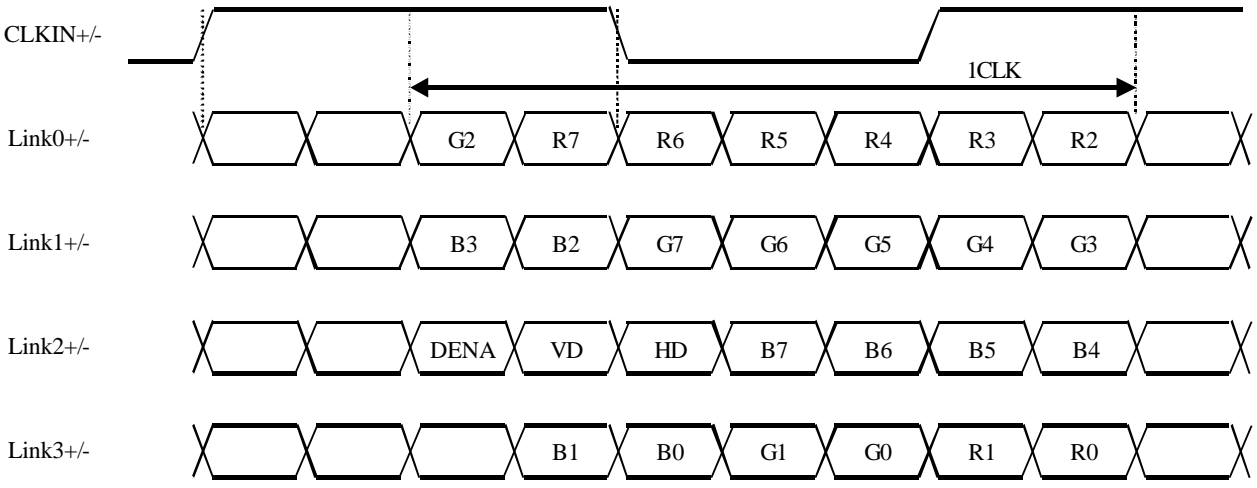
[Note] VBLH-VBL = VL

#### (4) ISP data mapping

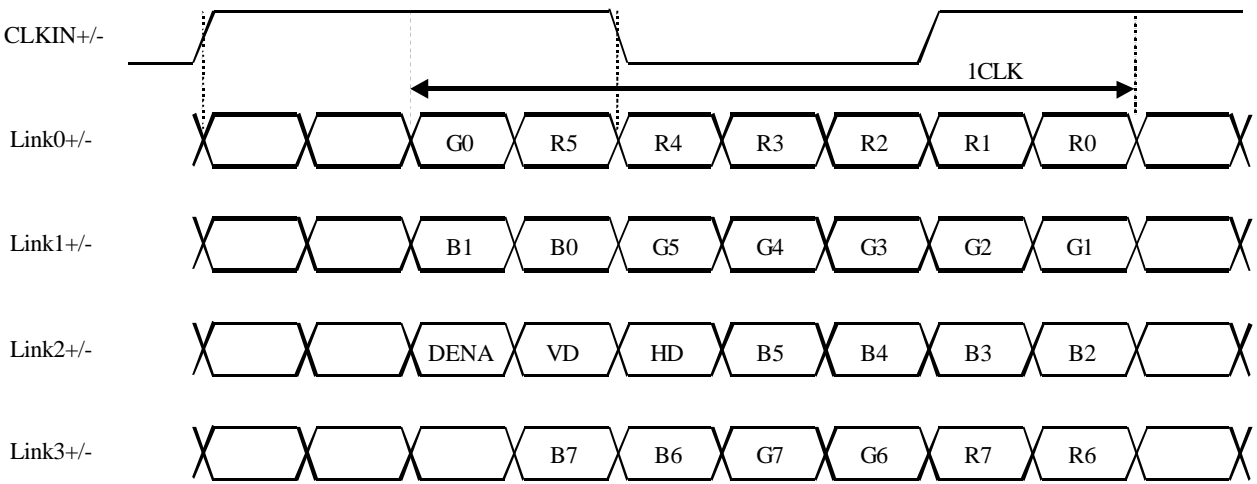
a. ISP 6 bit compatibility mode(6 bit input)



b. ISP 6 bit compatibility mode(8 bit input)



c. ISP 8 bit compatibility mode



## 6. INTERFACE TIMING

LVDS transmitter input signal

### (1) Timing Specifications

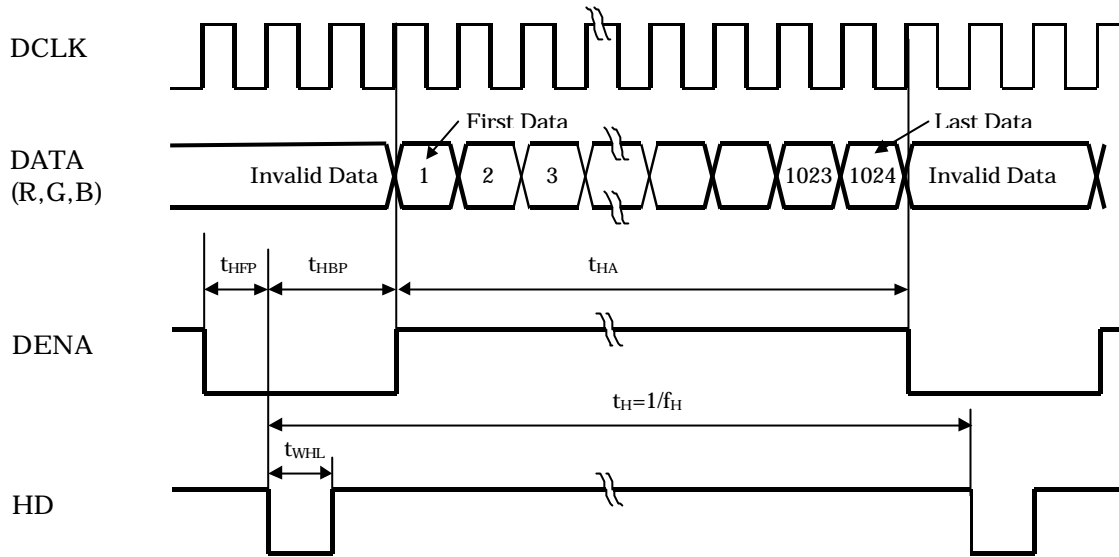
ITEM		SYMBOL	MIN.	TYP.	MAX.	UNIT	
LCD Timing	DCLK	Frequency	$f_{CLK}$	50	65	80	MHz
		Period	$t_{CLK}$	12.5	15.4	20	ns
	DENA	Horizontal Active Time	$t_{HA}$	1024	1024	1024	$t_{CLK}$
		Horizontal Front Porch	$t_{HFP}$	0	24	--	$t_{CLK}$
		Horizontal Back Porch	$t_{HBP}$	4	296	--	$t_{CLK}$
		Vertical Active Time	$t_{VA}$	768	768	768	$t_H$
		Vertical Front Porch	$t_{VFP}$	2	3	--	$t_H$
		Vertical Back Porch	$t_{VBP}$	1	35	--	$t_H$
	HD	Frequency	$f_H$	42.4	48.4	60	kHz
		Period	$t_H$	16.6	20.7	23.6	$\mu$ s
		Low Width	$t_{WHL}$	1	136	--	$t_{CLK}$
	VD	Frequency	$f_V$	55	60	75	Hz
		Period	$t_V$	13.3	16.7	18.2	ms
		Low Width	$t_{WVL}$	5	6	--	$t_H$

[Note]

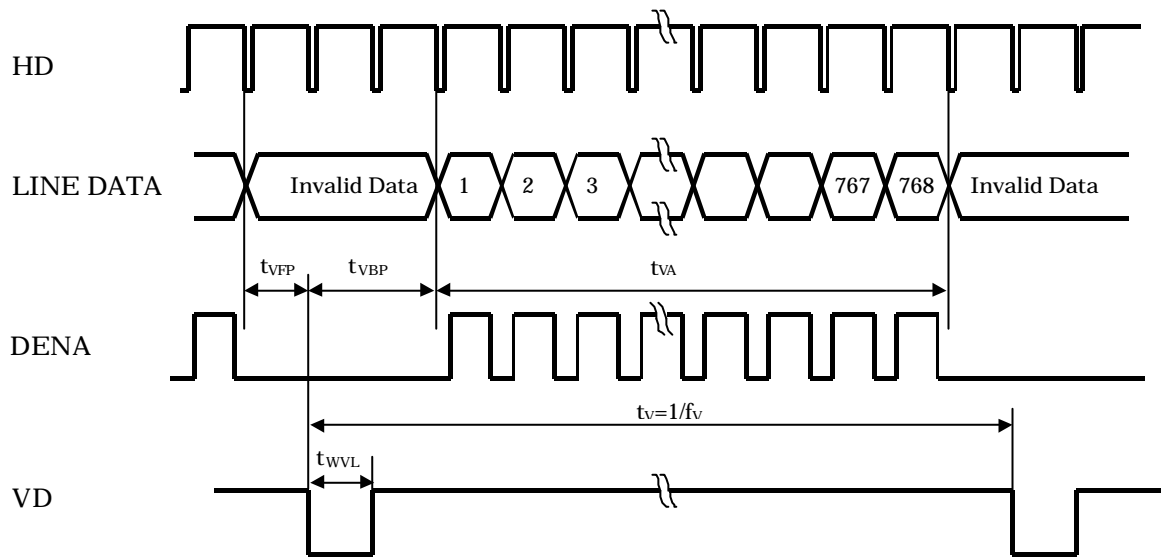
- \*1) Polarities of HD and VD are negative in this specification.
- \*2) DENA (Data Enable) should always be positive polarity as shown in the timing specification.
- \*3) DCLK should appear during all invalid period, and HD should appear during invalid period of frame cycle.
- \*4) LVDS timing follows the timing specifications of LVDS receiver IC: THC63LVDF84A(Thine).
- \*5)  $t_{VA} + t_{VFP} + t_{VBP} \leq 1024$
- \*6)  $t_{HFP} + t_{HBP} < 512$

(2) Timing Chart

a. Horizontal Timing Chart



b. Vertical Timing Chart



(3) Color Data Assignment

a. 6 bit input

COLOR		INPUT DATA																	
		R DATA						G DATA						B DATA					
		R5	R4	R3	R2	R1	R0	G5	G4	G3	G2	G1	G0	B5	B4	B3	B2	B1	B0
		MSB					LSB	MSB					LSB	MSB					LSB
BASIC COLOR	BLACK	0	0	0	0	0	0	0	0	0	0	0	0	0	0	0	0	0	
	RED(63)	1	1	1	1	1	1	0	0	0	0	0	0	0	0	0	0	0	
	GREEN(63)	0	0	0	0	0	0	1	1	1	1	1	1	0	0	0	0	0	
	BLUE(63)	0	0	0	0	0	0	0	0	0	0	0	0	1	1	1	1	1	
	CYAN	0	0	0	0	0	0	1	1	1	1	1	1	1	1	1	1	1	
	MAGENTA	1	1	1	1	1	1	0	0	0	0	0	0	1	1	1	1	1	
	YELLOW	1	1	1	1	1	1	1	1	1	1	1	1	0	0	0	0	0	
	WHITE	1	1	1	1	1	1	1	1	1	1	1	1	1	1	1	1	1	
RED	RED(1)	0	0	0	0	0	1	0	0	0	0	0	0	0	0	0	0	0	
	RED(2)	0	0	0	0	1	0	0	0	0	0	0	0	0	0	0	0	0	
	RED(62)	1	1	1	1	1	0	0	0	0	0	0	0	0	0	0	0	0	
	RED(63)	1	1	1	1	1	1	0	0	0	0	0	0	0	0	0	0	0	
GREEN	GREEN(1)	0	0	0	0	0	0	0	0	0	0	1	0	0	0	0	0	0	
	GREEN(2)	0	0	0	0	0	0	0	0	0	1	0	0	0	0	0	0	0	
	GREEN(62)	0	0	0	0	0	0	1	1	1	1	1	0	0	0	0	0	0	
	GREEN(63)	0	0	0	0	0	0	1	1	1	1	1	1	0	0	0	0	0	
BLUE	BLUE(1)	0	0	0	0	0	0	0	0	0	0	0	0	0	0	0	0	1	
	BLUE(2)	0	0	0	0	0	0	0	0	0	0	0	0	0	0	0	1	0	
	BLUE(62)	0	0	0	0	0	0	0	0	0	0	0	0	1	1	1	1	0	
	BLUE(63)	0	0	0	0	0	0	0	0	0	0	0	0	1	1	1	1	1	

[Note]

1) Definition of gray scale

Color (n) --- n indicates gray scale level.

Higher n means brighter level.

2) Data

1:High, 0: Low

**b. 8 bit input**

COLOR		INPUT DATA																							
		R DATA								G DATA								B DATA							
		R7	R6	R5	R4	R3	R2	R1	R0	G7	G6	G5	G4	G3	G2	G1	G0	B7	B6	B5	B4	B3	B2	B1	B0
		MSB							LSB	MSB							LSB	MSB							LSB
BASIC COLOR	BLACK	0	0	0	0	0	0	0	0	0	0	0	0	0	0	0	0	0	0	0	0	0	0	0	
	RED(255)	1	1	1	1	1	1	1	1	0	0	0	0	0	0	0	0	0	0	0	0	0	0	0	
	GREEN(255)	0	0	0	0	0	0	0	0	1	1	1	1	1	1	1	1	0	0	0	0	0	0	0	
	BLUE(255)	0	0	0	0	0	0	0	0	0	0	0	0	0	0	0	0	1	1	1	1	1	1	1	
	CYAN	0	0	0	0	0	0	0	0	1	1	1	1	1	1	1	1	1	1	1	1	1	1	1	
	MAGENTA	1	1	1	1	1	1	1	1	0	0	0	0	0	0	0	0	1	1	1	1	1	1	1	
	YELLOW	1	1	1	1	1	1	1	1	1	1	1	1	1	1	1	1	0	0	0	0	0	0	0	
	WHITE	1	1	1	1	1	1	1	1	1	1	1	1	1	1	1	1	1	1	1	1	1	1	1	
RED	RED(1)	0	0	0	0	0	0	0	1	0	0	0	0	0	0	0	0	0	0	0	0	0	0		
	RED(2)	0	0	0	0	0	0	1	0	0	0	0	0	0	0	0	0	0	0	0	0	0	0		
	RED(255)	1	1	1	1	1	1	1	1	0	0	0	0	0	0	0	0	0	0	0	0	0	0		
GREEN	GREEN(1)	0	0	0	0	0	0	0	0	0	0	0	0	0	0	1	0	0	0	0	0	0	0		
	GREEN(2)	0	0	0	0	0	0	0	0	0	0	0	0	0	1	0	0	0	0	0	0	0	0		
	GREEN(255)	0	0	0	0	0	0	0	0	1	1	1	1	1	1	1	0	0	0	0	0	0	0		
BLUE	BLUE(1)	0	0	0	0	0	0	0	0	0	0	0	0	0	0	0	0	0	0	0	0	0	1		
	BLUE(2)	0	0	0	0	0	0	0	0	0	0	0	0	0	0	0	0	0	0	0	0	1	0		
	BLUE(255)	0	0	0	0	0	0	0	0	0	0	0	0	0	0	0	1	1	1	1	1	1	1		

[Note]

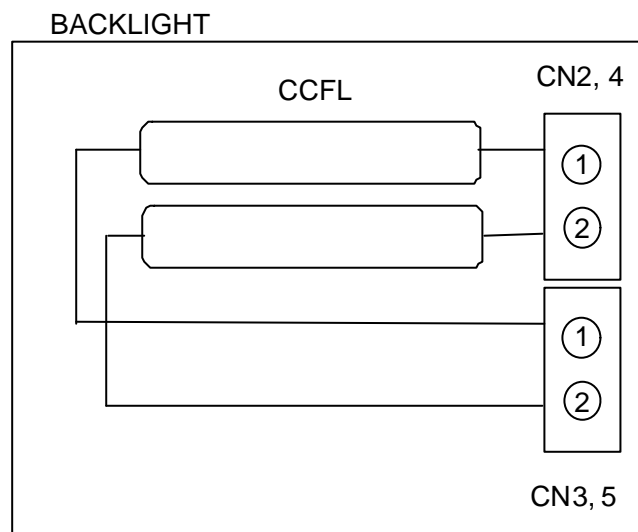
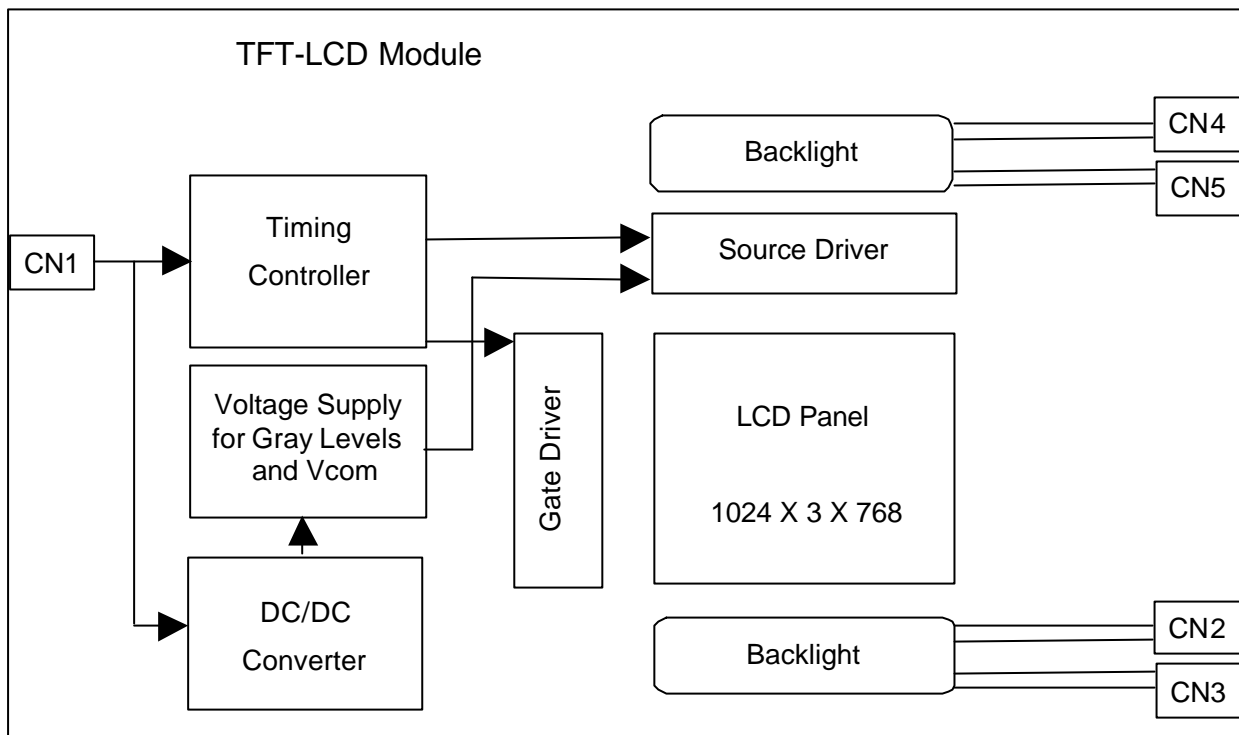
\*1) Definition of gray scale  
 Color (n) --- n indicates gray scale level.  
 Higher n means brighter level.

\*2) Data  
 1:High, 0: Low

(4) Data Mapping

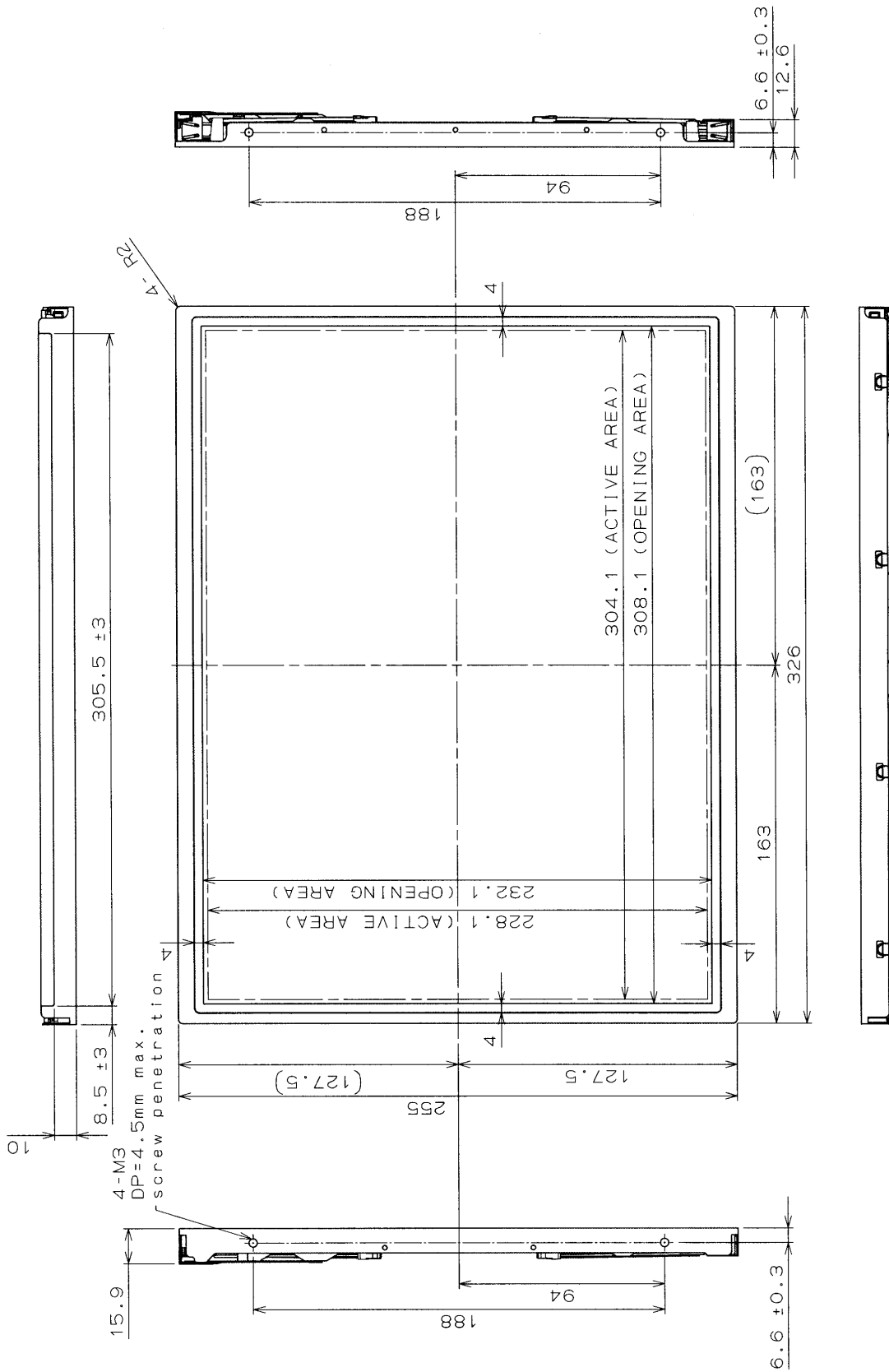
D( 1, 1)	D( 2, 1)	---	D( X, 1)	---	D(1023, 1)	D(1024, 1)
D( 1, 2)	D( 2, 2)	---	D( X, 2)	---	D(1023, 2)	D(1024, 2)
⋮	⋮	+	⋮	+	⋮	⋮
D( 1, Y)	D( 2, Y)	---	D( X, Y)	---	D(1023, Y)	D(1024, Y)
⋮	⋮	+	⋮	+	⋮	⋮
D( 1,767)	D( 2,767)	---	D( X,767)	---	D(1023,767)	D(1024,767)
D( 1,768)	D( 2,768)	---	D( X,768)	---	D(1023,768)	D(1024,768)

## 7. BLOCK DIAGRAM



# 8. MECHANICAL SPECIFICATIONS

(1) Front side



1) Tolerance is ±0.5mm unless noted.  
 2) Except for thickness of PET film.

(Unit: mm)



## 9. OPTICAL CHARACTERISTICS

Ta = 25°C, VCC = 3.3 V, Input Signals: Typ. Values shown in Section 6

ITEM	SYMBOL	CONDITION	MIN.	TYP.	MAX.	UNIT	Remarks		
Contrast Ratio	CR	$\theta = \phi = 0^\circ$	300	450	--	--	*1)*3)		
Luminance	Normal	$\theta = \phi = 0^\circ$	360	450	--	cd/m <sup>2</sup>	*2)*3)		
	Uniformity	$\Delta Lw$	--	--	30	%	*2)*3)		
Response Time	tr	$\theta = \phi = 0^\circ$	--	6	--	ms	*3)*4)		
	tf	$\theta = \phi = 0^\circ$	--	19	--	ms	*3)*4)		
Viewing Angle	Horizontal	$\phi$	CR $\geq 10$		--	-75~75	--	°	*3)
	Vertical	$\theta$	--	-60~50	--	--	--	°	*3)
	Horizontal	$\phi$	CR $\geq 5$		--	-80~80	--	°	*3)
	Vertical	$\theta$	--	-80~70	--	--	--	°	*3)
Image Sticking	tis	2 h	--	--	2	s	*5)		
Color Coordinates	Red	Rx	$\theta = \phi = 0^\circ$	0.575	0.605	0.635	--	*3)	
		Ry		0.310	0.340	0.370			
	Green	Gx		0.281	0.311	0.341			
		Gy		0.535	0.565	0.595			
	Blue	Bx		0.124	0.154	0.184			
		By		0.100	0.130	0.160			
	White	Wx		0.283	0.313	0.343			
		Wy		0.299	0.329	0.359			

[Note]

These items are measured using CS1000(MINOLTA) for color coordinates, EZContrast(ELDIM) for viewing angle, and CS1000 or BM-5A(TOPCON) for others under the dark room condition (no ambient light) after more than 30 minutes from turning on the lamp unless noted.

Condition: IL = 6.5 mArms, Inverter frequency: 50 kHz

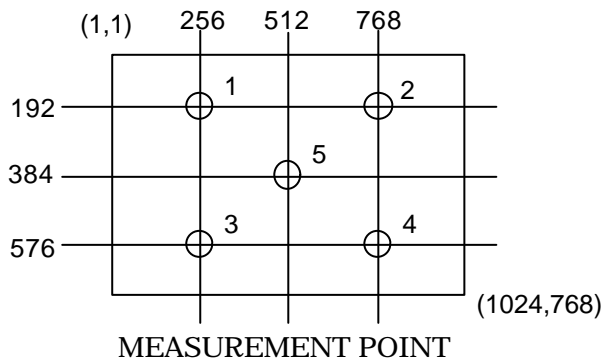
\*1) Definition of Contrast Ratio

CR=ON(White) Luminance / OFF(Black) Luminance: measurement point 5 (center point) shown in a figure below

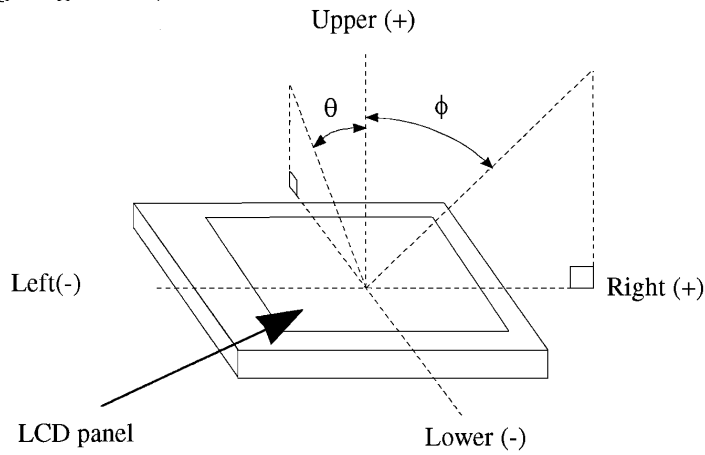
\*2) Definition of Luminance and Luminance Uniformity

Lw=ON (White) Luminance: measurement point 5 (center point) shown in a figure below

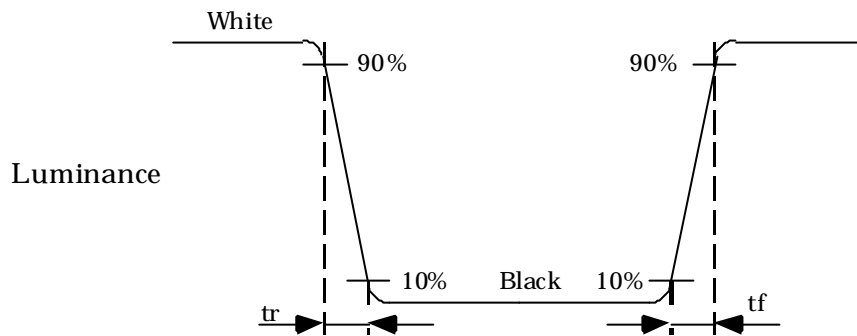
$\Delta Lw = [Lw(\text{MAX})/Lw(\text{MIN}) - 1] \times 100$



\*3) Definition of Viewing Angle(  $\theta$  ,  $\phi$  )



\*4) Definition of Response Time

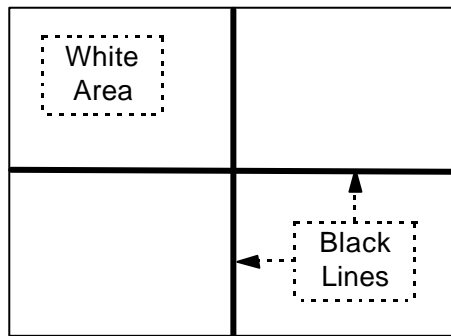


\*5) Image Sticking

Continuously display the test pattern shown in the figure below for two-hours. Then display a completely white screen. The previous image shall not persist more than two seconds at 25°C.

Cols 510-514

Rows 382-386



TEST PATTERN FOR IMAGE STICKING TEST

## 10. RELIABILITY TEST CONDITION

### (1) Temperature and Humidity

TEST ITEM	CONDITIONS
HIGH TEMPERATURE HIGH HUMIDITY OPERATION	40°C, 90% RH, 240 h (No condensation)
HIGH TEMPERATURE OPERATION	70°C, 240 h
LOW TEMPERATURE OPERATION	-20°C, 240 h
THERMAL SHOCK (Non-Operation)	BETWEEN -20°C (1h) and 70°C(1h), 100 CYCLES
HIGH TEMPERATURE STORAGE	70°C, 240 h
LOW TEMPERATURE STORAGE	-20°C, 240 h

### (2) Shock & Vibration

ITEM	CONDITIONS
SHOCK (NON-OPERATION)	Shock level: 980 m/s <sup>2</sup> (100 G ) Waveform: half sinusoidal wave, 2 ms Number of shocks: one shock input in each direction of three mutually Perpendicular axes for a total of six shock inputs
VIBRATION (NON-OPERATION)	Vibration level: 9.8 m/s <sup>2</sup> (1.0 G ) zero to peak Waveform: sinusoidal Frequency range: 5 to 500 Hz Frequency sweep rate: 0.5 octave /min Duration: one sweep from 5 to 500 Hz in each of three mutually perpendicular axis(each x,y,z axis: 1 hour, total 3 hours)

### (3) Judgment standard

The judgment of the above tests should be made as follow:

Pass: Normal display image, no damage of the display function. (ex. no line defect)

Partial transformation of the module parts should be ignored.

Fail: No display image, damage of the display function. (ex. line defect)

# 11. INSPECTION STANDARDS

Inspection condition is as follows:

- Viewing distance: approximately 35 cm.
- Viewing angle: normal to the LCD panel  $\pm 10^\circ$  horizontal and vertical.
- Ambient temperature: approximately 25°C.
- Ambient light: 300 - 500 lx.

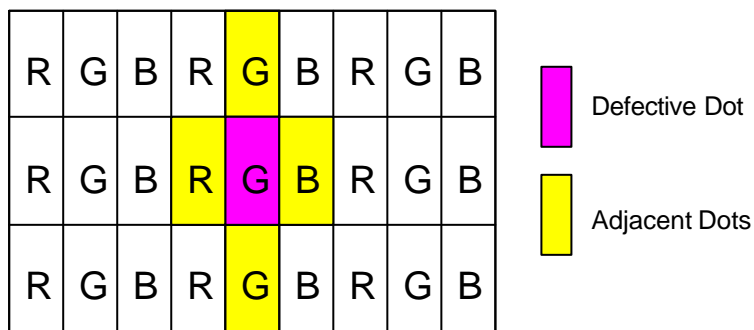
Bright Dot is defined as follows:

Visible through 5% transmission ND filter under the condition that black image (color 0) is on the display.

DEFECT TYPE		LIMIT	
VISUAL DEFECT	SCRATCH	$0.01 \text{ mm} < W \leq 0.05 \text{ mm}$ $L \leq 10 \text{ mm}$	$N \leq 4$
		$0.01 \text{ mm} < W$ $10 \text{ mm} < L$	$N = 0$
		$0.05 \text{ mm} < W$	$N = 0$
	DENT	$0.2 \text{ mm} < \phi \leq 0.4 \text{ mm}$	$N \leq 4$
		$0.4 \text{ mm} < \phi$	$N = 0$
	BLACK SPOT BUBBLE	$0.2 \text{ mm} < \phi \leq 0.4 \text{ mm}$	$N \leq 5$
		$0.4 \text{ mm} < \phi$	$N = 0$
	LINT	$L \leq 3 \text{ mm}$ $W \leq 0.1 \text{ mm}$	$N \leq 4$
		$3 \text{ mm} < L$ $W \leq 0.1 \text{ mm}$	$N = 0$
$0.1 \text{ mm} < W$		ACCORDING TO BLACK SPOT	
ELECTRICAL DEFECT	BRIGHT DOT	$N \leq 5$	
	DARK DOT	$N \leq 5$	
	TOTAL DOT	$N \leq 8$	
	TWO ADJACENT DOT BRIGHT DOT DARK DOT	$\leq 2 \text{ PAIRS}$ $\leq 2 \text{ PAIRS}$	
	THREE OR MORE ADJACENT DOT	NOT ALLOWED	
	LINE DEFECT	NOT ALLOWED	

\*1) W: width,L: length, $\phi$  : diameter,N: number

\*2) DEFINITION OF ADJACENT



The defects that are not defined above and considered to be problem shall be reviewed and discussed by both parties.

## 12. HANDLING PRECAUTIONS FOR TFT-LCD MODULE

Please pay attention to the followings in handling TFT-LCD products;

### (1) ASSEMBLY PRECAUTION

- a. Please mount the LCD module by using mounting hole with a screw clamping torque less than 0.5 Nm. Please do not bend or wrench the LCD module in assembling. Please do not drop, bend or twist the LCD module in handling. Please mount the inverter circuit board by using mounting hole of rear side with a screw clamping torque less than 0.2 Nm.
- b. Please design display housing in accordance with the following guide lines.
  - (a) Housing case must be designed carefully so as not to put stresses on LCD all sides and not to wrench module. The stresses may cause non-uniformity even if there is no non-uniformity statically.
  - (b) Keep sufficient clearance between LCD module back surface and housing when the LCD module is mounted. Approximately 1.0mm of the clearance in the design is recommended taking into account the tolerance of LCD module thickness and mounting structure height on the housing.
  - (c) When some parts, such as, FPC cable and ferrite plate, are installed underneath the LCD module, still sufficient clearance is required, such as 0.5mm. This clearance is, especially, to be reconsidered when the additional parts are implemented for EMI countermeasure.
  - (d) Design the inverter location and connector position carefully so as not to give stress to lamp cable, or not to interface the LCD module by the lamp cable.
  - (e) Keep sufficient clearance between LCD module and the others parts, such as inverter and speaker so as not to interface the LCD module. Approximately 1.0mm of the clearance in the design is recommended.
  - (f) To avoid local elevation/decrease of temperature, considering location of heating element, heat release, thermal design should be done.
- c. Please do not push or scratch LCD panel surface with anything hard. And do not soil LCD panel surface by touching with bare hands. (Polarizer film, surface of LCD panel is easy to be flawed.)
- d. Please do not press any parts on the rear side such as source TCP, gate TCP, control circuit board and FPCs during handling LCD module. If pressing rear part is unavoidable, handle the LCD module with care not to damage them.
- e. Please wipe off LCD panel surface with absorbent cotton or soft cloth in case of it being soiled.
- f. Please wipe off drops of adhesives like saliva and water on LCD panel surface immediately. They might damage to cause panel surface variation and color change.
- g. Please do not take a LCD module to pieces and reconstruct it. Resolving and reconstructing modules may cause them not to work well.
- h. Please do not touch metal frames with bare hands and soiled gloves. A color change of the metal frames can happen during a long preservation of soiled LCD modules.
- i. Please pay attention to handling lead wire of backlight so that it is not tugged in connecting with

inverter.

- j. Please connect the metal frame of LCD module to GND in order to minimize the effect of external noise and EMI.
- k. Be sure to connect the cables and the connectors correctly.

## **(2) OPERATING PRECAUTIONS**

- a. Please be sure to turn off the power supply before connecting and disconnecting signal input cable.
- b. Please do not change variable resistance settings in LCD module. They are adjusted to the most suitable value. If they are changed, it might happen LCD does not satisfy the characteristics specification.
- c. LCD backlight takes longer time to become stable of radiation characteristics in low temperature than in room temperature.
- d. The interface signal speed is very high. Please pay attention to transmission line design and other high speed signal precautions to satisfy signal specification.
- e. A condensation might happen on the surface and inside of LCD module in case of sudden change of ambient temperature.
- f. Please pay attention not to display the same pattern for very long time. Image might stick on LCD. Even if image sticking happens, it may disappear as the operation time proceeds.
- g. Please obey the same safe instructions as ones being prepared for ordinary electronic products.

## **(3) PRECAUTIONS WITH ELECTROSTATICS**

- a. This LCD module use CMOS-IC on circuit board and TFT-LCD panel, and so it is easy to be affected by electrostatics. Please be careful with electrostatics by the way of your body connecting to the ground and so on.
- b. Please remove protection film very slowly from the surface of LCD module to prevent from electrostatics occurrence.

## **(4) STORAGE PRECAUTIONS**

- a. Please do not leave the LCDs in the environment of high humidity and high temperature such as 60°C90% RH.
- b. Please do not leave the LCDs in the environment of low temperature; below -20°C.

## **(5) SAFETY PRECAUTIONS**

- a. When you waste damaged or unnecessary LCDs, it is recommended to crush LCDs into pieces and wash them off with solvents such as acetone and ethanol, which should later be burned.

- b. If any liquid leaks out of a damaged glass cell and comes in contact with the hands, wash off thoroughly with soap and water.
- c. Be sure to turn off the power supply when inserting or disconnecting the cable.
- d. Inverter should be designed carefully so as not to keep working in case of detecting over current or open circuit on the lamp.

**(6) OTHERS**

- a. A strong incident light into LCD panel might cause display characteristics changing inferior because of polarizer film, color filter, and other materials becoming inferior. Please do not expose LCD module direct sunlight and strong UV rays.
- b. Please pay attention to a panel side of LCD module not to contact with other materials in preserving it alone.
- c. For the packaging box, please pay attention to the followings;
  - (a) Packaging box and inner case for LCD are designed to protect the LCDs from the damage or scratching during transportation. Please do not open except picking LCDs up from the box.
  - (b) Please do not pile them up more than 5 boxes. (They are not designed so.) And please do not turn over.
  - (c) Please handle packaging box with care not to give them sudden shock and vibrations. And also please do not throw them up.
  - (d) Packaging box and inner case for LCDs are made of cardboard. So please pay attention not to get them wet. (Such like keeping them in high humidity or wet place can occur getting them wet.)

### 13. REVISION STATUS

Rev.	Description	Date	Prepared	Checked
				Approved
First	First Revision	Jun.3,'04	K.Ichikawa	T.Hatashita
				M.Nishimura

## AA150XN\*\*Packaging Specification

### Packaging specification

1. Packaging box
- |                             |  |
|-----------------------------|--|
| material:                   | cardboard                                    |
| construction:               | See fig. 1                                   |
| max. packaging number:      | 10 pcs.                                      |
| dimension:                  | 488 (W) × 395 (H) × 361 (D)[mm]              |
| mass(including 10 modules): | 17.4 kg                                      |
| label:                      | Labels are put on the box.(See fig. 2, 3, 4) |

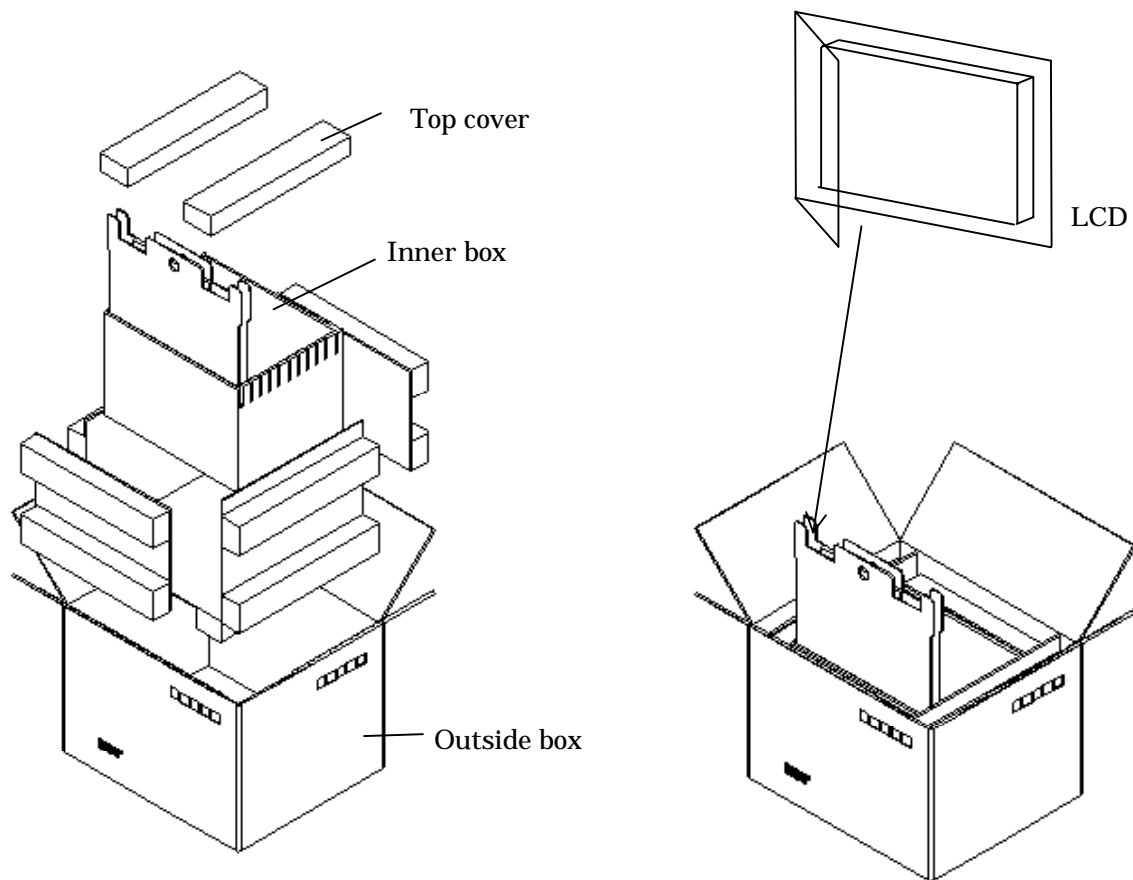


Fig. 1. Illustration of packaging box structure

Product name	Packaging number
Bar-code	Bar-code
Serial No.	Serial No.
Bar-code	Bar-code
Serial No.	Serial No.
Bar-code	Bar-code
Serial No.	Serial No.
Bar-code	Bar-code
Serial No.	Serial No.
Bar-code	Bar-code
Serial No.	Serial No.
Bar-code	Bar-code

Fig.2. Label 1

	Box No.
	Mass
Shipping No. Bar-code	
Shipping No. Bar-code	
Packaging No. Bar-code	
Shipping No. Bar-code	
Products name	
Bar-code	

Fig.3. Label 2

Overseas sales office
Product name
Shipping No.
Box No.
MADE IN _____
Bar-code
Shipping date

Fig. 4. Label 3

ABC
TFT-LCD:AA150XN**
P/O NO. NDF JZ55188
C/S NO. 049 OF 400
MADE IN JAPAN
 049
1998/03/06
JA8361074 

Fig. 5 Sample of Label 3

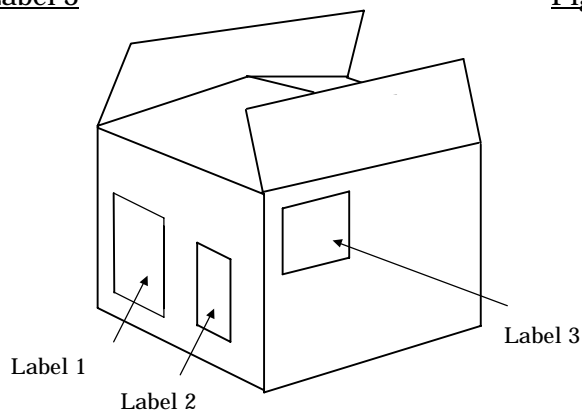


Fig. 6. Location of Labels

2. Location of label on the packaging box

- Labels are put on the box.(See Fig.6)

3. Packaging form of product

- Each of LCD module is packed in anti-electrostatic bag(Fig. 7)
- Packed LCD module is put in the packaging box.(Fig. 8)
- The packaging box accumulates maximum 10 modules.
- Upper protector is put on the products and shut the box.(Fig. 9)

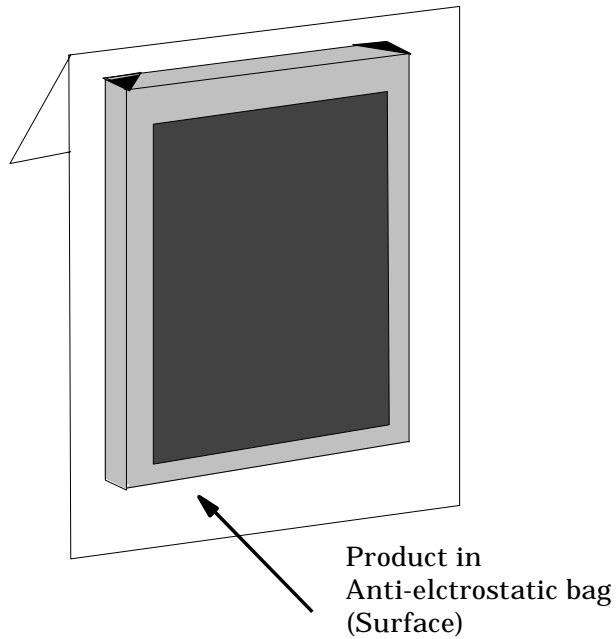


Fig. 7

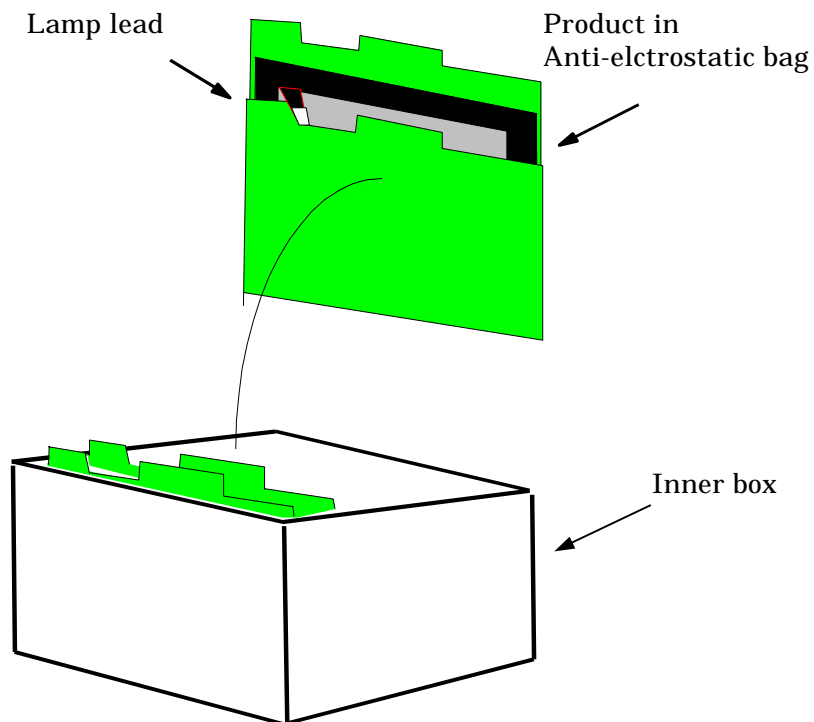


Fig. 8

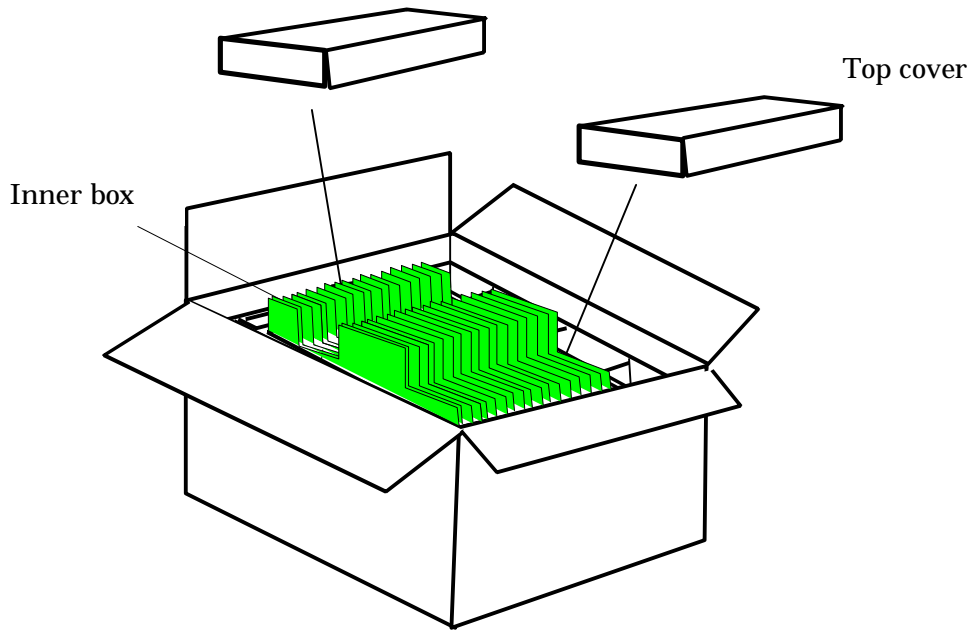


Fig. 9

#### 4. Cautions of shipping & storage

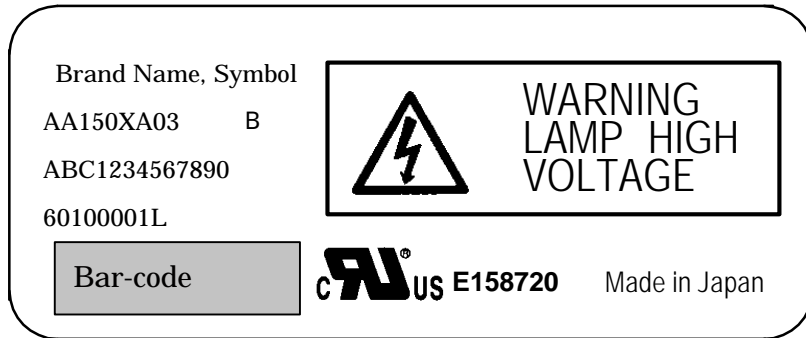
- Do not turn the packaging upside down while storage and transportation. The boxes should not be piled up more than 5.
- Handle with care. Keep off from rain & dew.
- Keep off from direct sunlight exposure. Please store under room temperature & low humidity in original packaging condition when they were shipped.
- Keep other cautions described in handling manual.

5 . Revision Status


Rev.	Description	Date	Prepared	Checked
				Approved
First	First Revision	Jun.3,'04	K.Ichikawa	T.Hatashita
				M.Nishimura

## Products Number Labeling Forms

Products number label is constructed as below;



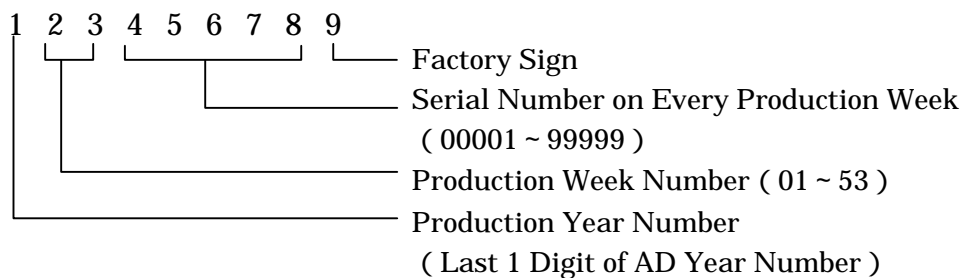
Brand Name, Symbol  
 Products Name  
 Production Key Number (13Digits)  
 Date Code  
 (Serial Number, Factory Sign)  
 Bar-code of Date Code  
 UL File No.  
 Production Country

Brand Name, Symbol  
 MITSUBISHI ELECTRIC

Products Name  
 ex.1: AA121SJ23      ex.2: AA150XA03 B

Production Key Number  
 (ID Number for Production Control)

Date Code ( Serial Number, Factory Sign )



- Date Code is constructed by 9 Digits as below;
  - 1st Digit           : Production Year Number ( Last 1 Figure of AD Year )
  - 2nd ~ 3rd Digit   : Production Week Number in a Year  
                   ( A Year is divided to 53 weeks from Monday to Saturday )
  - 4th ~ 8th Digit   : Serial Number on Every Production Weeks.  
                   ( 00001 ~ 99999 )
  - These are numbered in order according to Production Name.
  - 9th Digit           : Factory Sign ( on the Module Test Process )  
                   (L: Shisui Factory Line, Y: YACHIYO SANYO Industries  
                   Line,  
                   W: CPT Fab-1, R: CPT Fab-2, U: CPT Wujiang-LCM-1,  
                   V: CPT Wujiang-LCM-2 )

Bar-code(Date Code )

Bar-code Line for computer reading Date Code mentioned as above.

UL File No.

MDTI: E158720, CPT: E194548

Production Country

MDTI: Made in Japan, CPT: Made in Taiwan

# **LAMP UNIT for 15.0" XGA (AA150XN02, 03, 04)**

AA-L5902174G01(Top)  
AA-L5902175G01(Bottom)

TECHNICAL SPECIFICATION

MITSUBISHI ELECTRIC Corp.

Date: Jun.3,'04

# CONTENTS

No.	Item	Page
--	COVER	1
--	CONTENTS	2
1	APPLICATION	3
2	MECHANICAL SPECIFICATION	3
3	ENVIRONMENTAL CONDITIONS	3
4	ABSOLUTE MAXIMUM RATINGS	3
5	ELECTRICAL CHARACTERISTICS	3
6	OPTICAL CHARACTERISTICS	4
7	LIFE TIME OF THE LAMP UNIT	4
8	INTERFACE PIN CONNECTION	4
9	DRAWING OF OUTLINE DIMENTIONS	5
10	METHOD OF REPLACING THE LAMP UNIT	6, 7, 8, 9
11	REVISION STATUS	10

## 1. APPLICATION

This technical literature applies to the replaceable lamp unit that is the maintenance parts for 15.0"XGA TFT-LCD module industrial use(model name:AA150XN02,03,04)  
(AA-L5902174G01(Top), AA-L5902175G01 (Bottom))

## 2. MECHANICAL CHARACTERISTICS

Item	Specification	Remarks
Outline Dimension of Reflector	324 ± 0.6 × 7.0 ± 0.1 × 8.3 ± 0.1 (mm)	Except wire
Mass	22 ± 3(g)(MAX)	With wire and connector
Lamp Diameter	φ 2.4 -1.8 (mm)	

See 9. DRAWING OF OUTLINE DIMENTIONS (Page 5)

## 3. ENVIRONMENTAL CONDITIONS

Item	Operation		Non Operation		Remarks
	MIN	MAX	MIN	MAX	
Ambient Temperature	-20	70	-20	70	No Condensation

Top,Tstg ≤ 40°C : 90%RH max. without condensation

Top,Tstg > 40°C : Absolute humidity shall be less than the value of 90%RH at 40°C without condensation.

## 4. ABSOLUTE MAXIMUM RATINGS

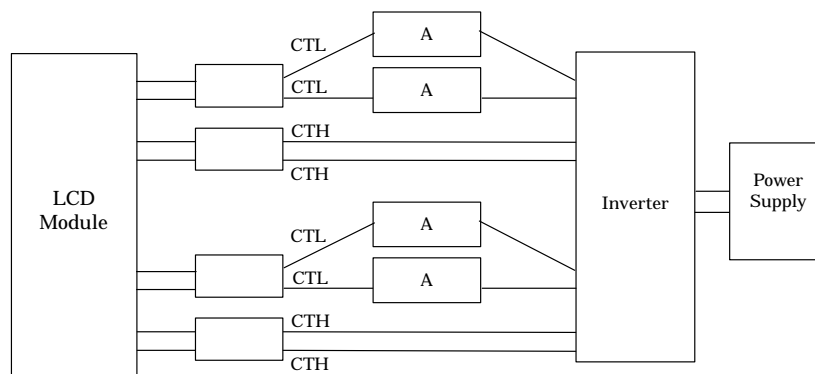
Item	Symbol	MIN	MAX	UNIT
Lamp Current	IL	0	10.0	mArms
Lamp Voltage	VS	0	2500	Vrms
Lamp Frequency	FL	0	100	kHz

## 5. ELECTRICAL CHARACTERISTICS

Item	Symbol	Condition	MIN	TYP	MAX	Unit	Remarks
Lamp Current	IL	Ta = 25°C	3.5	6.5	8.0	mArms	
Lamp Voltage	VL	Ta = 25°C	-	620	-	Vrms	
Starting Lamp Voltage	VS	Ta = 25°C	1300	-	-	Vrms	
		Ta = -20°C	1650	-	-	Vrms	
Lamp Frequency	FL	Ta = 25°C, IL = 6.5 mArms	40	-	70	kHz	

\*1) These values are shown by TDK using CXA-0385 inverter.

\*2) Lamp Current measurement method (The current meter is inserted in low voltage line.)



## 6. OPTICAL CHARACTERISTICS

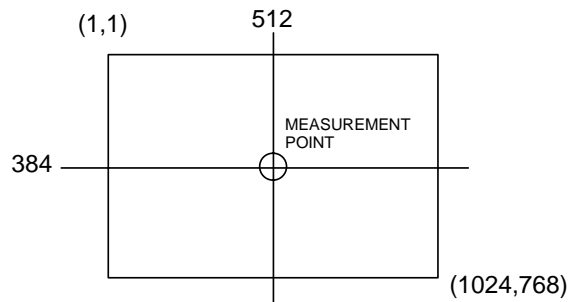
Ta=25°C, 60±10%RH

Item	Symbol	MIN	TYP	MAX	Unit	Remarks
Luminance	XN02	Lw	360	450	--	cd/m <sup>2</sup>
	XN03	Lw	280	350	--	cd/m <sup>2</sup>
	XN04	Lw	320	400	--	cd/m <sup>2</sup>
Color Coordinates (White)	Wx	0.283	0.313	0.343	-	Measurement point shown in the figure below
	Wy	0.299	0.329	0.359	-	

[Conditions]

IL=6.5 mArms, Inverter frequency: 50 kHz

[Measurement Point]



These items are measured when lamp units are assembled into AA150XN02, XN03 or XN04, and using CS1000(MINOLTA) for color coordinates, and CS1000 or BM-5A(TOPCON) for Luminance under the dark room condition (no ambient light) after more than 30 minutes from turning on the lamp unless noted.

## 7. LIFE TIME OF THE LAMP UNIT

Environmental Conditions are as follows:

Ambient temperature is 25±5°C.

Lamp Current is 6.5 mArms.

Continuous Operation	50,000 h
Number of turning on and off	100,000 times (30 sec ON-OFF)

- (1) Lamp life time is defined as the time either when the brightness becomes 50% of the initial value, or when the starting lamp voltage does not meet the value specified in the table of section 5.
- (2) The life time of the backlight depends on the ambient temperature. The life time will decrease under low/high temperature.
- (3) Following standards should be satisfied
  - No flickers should be allowed.
  - Decrease in luminous length that is caused by lamp blacking is within 11 mm from the edge of the lamp.

## 8. INTERFACE PIN CONNECTION

- (1) Backlight-side connector: BHSR-02VS-1(JST)  
 Inverter-side connector: SM02B-BHSS-1-TB

Pin No.	Symbol	Function
1, 2	CTH	VBLH ( High Voltage )

[Note] VBLH-VBLL = VL

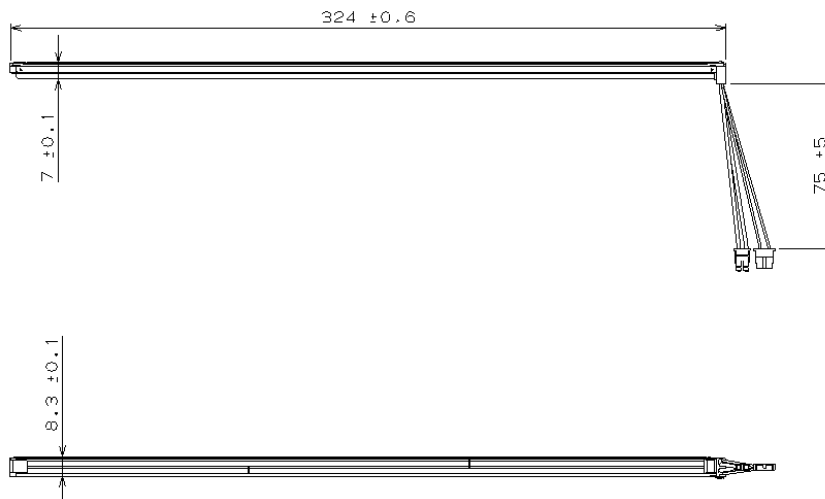
- (2) Backlight-side connector: BHR-02VS-1(JST)  
 Inverter-side connector: SM02(4.0)B-BHS-1-TB

Pin No.	Symbol	Function
1, 2	CTL	VBLL ( Low Voltage )

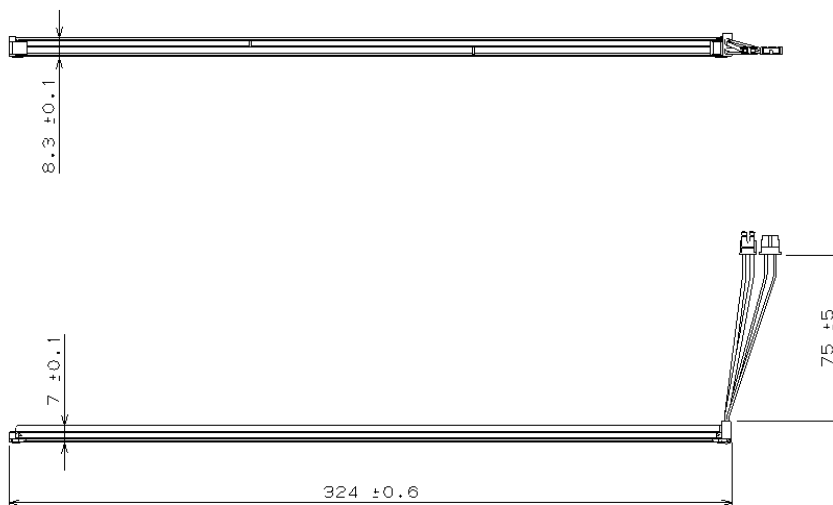
[Note] VBLH-VBLL = VL

## 9. DRAWING OF OUTLINE DIMINTIONS

- (1) AA-L5902174G01(Top)



- (2) AA-L5902175G01(Bottom)



## 10. METHOD OF REPLACING THE LAMP UNIT

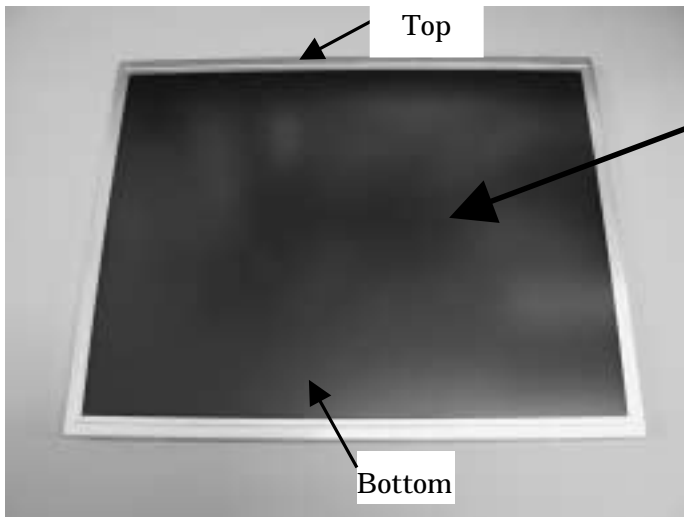
### (1) Precautions

Please pay attention to the following items while replacing the Lamp Unit.

- a. Please do not damage the LCD Panel Surface, and do not touch it with bare hands.  
(Wearing gloves is recommended.)
- b. Please be careful with electrostatics, and work in clean environment to prevent entering dust and/or foreign matters that will cause bad display image.
- c. Please be careful of the edge of the frame metal.
- d. Please replace top and bottom lamp units at the same time. Replace only one lamp unit will cause inferior display image.

### (2) Method of replacing the Lamp Unit

1) Put the TFT-LCD Module on the table.(LCD Panel Surface is upside.)

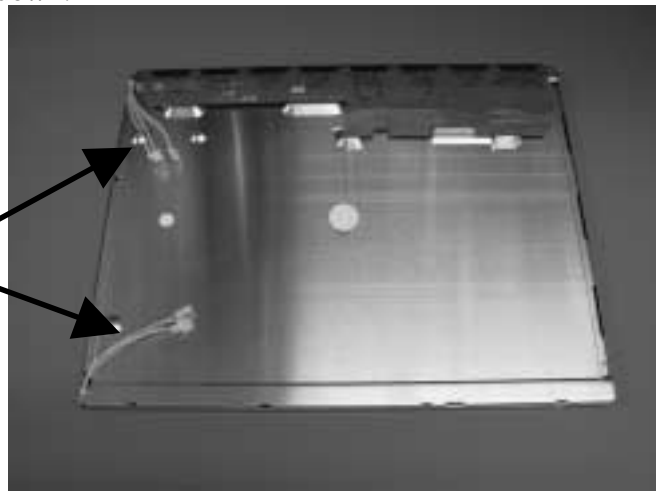


Please check the LCD Panel Surface for scratch, dust, and foreign matters.

Picture 1

2) Turn the TFT-LCD Module upside down.

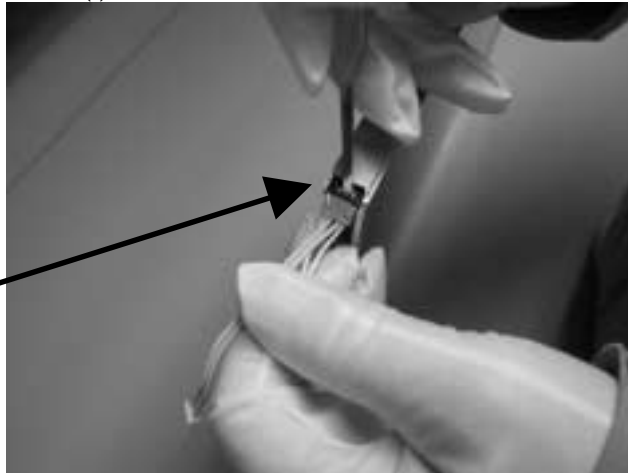
Please check the rear surface for dust and foreign matters.



Picture 2

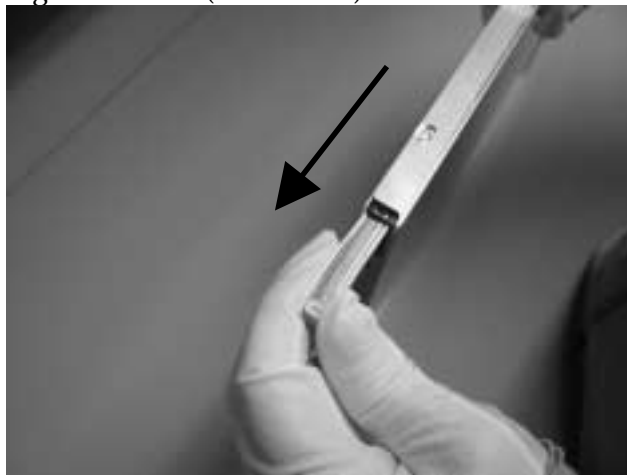
- 3) Stand the TFT-LCD Module up and push down the latch of rubber holder with that Lamp Unit fastens using a screw driver(-) and the like.

Push down the latch of rubber holder.



Picture 3

- 4) Pull the low voltage side cable (thin cable) slowly and remove the Lamp Unit. Do not tug at the high voltage side cable (thick cable).



Picture 4

- 5) Remove the other Lamp Unit at the opposite(bottom) side of LCD Module in the same way. See.3) and 4)

- 6) Picture 5 shows the TFT-LCD Module after removing the Lamp Units.



Picture 5

7) Prepare to insert the new Lamp Units.

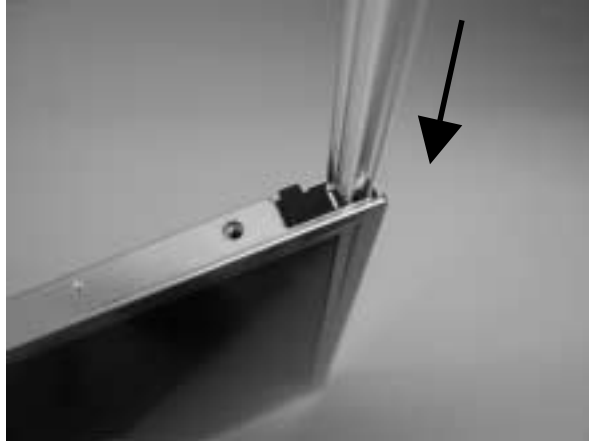
- Open the package and take the new Lamp Units out.
- Check the new Lamp Units for dust and foreign matters.

8) Stand the TFT-LCD module up and insert the new Lamp Unit.

The light guide and reflector sheet should be inside of the Lamp Unit.

Please be careful not to hurt your hands from the edge of the Lamp Unit.

Please pay attention to insert direction.

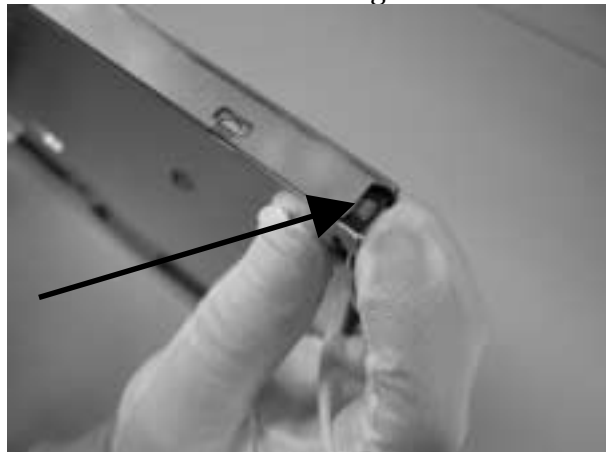


Picture 6

9) Please insert Lamp Unit. After inserting the Lamp Unit, please check that the Lamp Unit is fastened with the latch of rubber holder.

Please be careful not to tug at and bend the wire hard in handling.

Please check that the Lamp Unit is fastened with the latch of rubber holder.



Picture 7

10) Put the lamp cables in the trench of the plastic frame to keep inside of the module.



Picture 8

11) Insert the other Lamp Unit to the opposite(bottom) side of the LCD module in the same way. See. 8) to 10)

12) After replacing the Lamp Units, please check the following items.

- Appearance of TFT-LCD Module is not changed after replacing Lamp Units.  
(See. Picture 1 and Picture 2)
- There is no damage, dust, or foreign matters on the LCD Panel Surface.
- Install the TFT-LCD Module then check turning on the lamps.

## 11. REVISION STATUS

Rev.	Description	Rev. Date	Prepared	Checked
				Approved
First	First Revision	Mar.16,'04	T.Hatashita	Y.Numano K.Kobayashi
A	MITSUBISHI/MDTI Confidential → MITSUBISHI Confidential	Apr.27,'04	K.Ichikawa	T.Hatashita M.Nishimura
B	3. ENVIRONMENTAL CONDITIONS Ambient temperature(Operation): -10°C →-20°C(MIN), 60°C →70°C(MAX) 5. ELECTRICAL CHARACTERISTICS Starting Lamp Voltage: 1400→1300(MIN) 1600→1650(MIN), Ta=0°C→Ta= -20°C,(P3) 6. OPTICAL CHARACTERISTICS Luminance(XN04): 280→320(MIN),350→400(TYP) Remarks: Value of center point(5) →Measurement point shown in the figure below Change: [Measurement Point],(P4)	Jun.3,'04	K.Ichikawa	T.Hatashita  M.Nishimura