



# Product Specifications

## Touch Panel Controller

### THC-5641

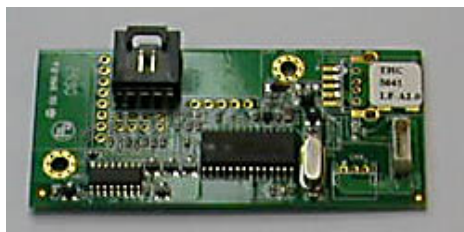
Product Version: V01



**RoHS Compliance**

**Issue Date: Oct-31-2007**

**Document Version: 1.2**





**Overview:**

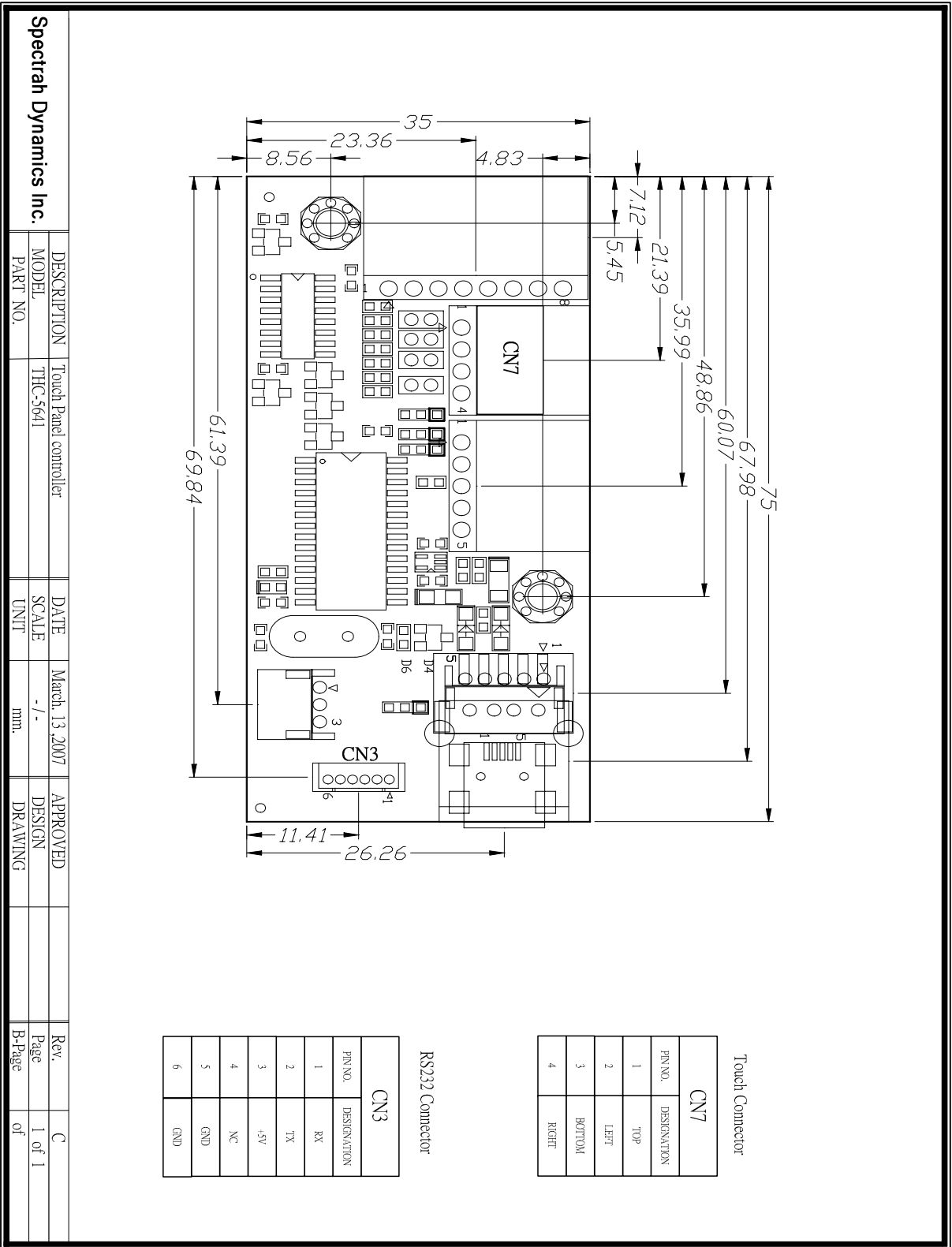
The THC-5641 provides the optimistic performance for most 4-wire analog resistive touch panels. It communicates with PC system directly through RS-232 port. The touchscreen device driver is able to emulate mouse left and right button for various operation systems.

**Hardware Specifications**

Circuit Board Dimension	75.00mm x 35.00mm
Touch Controller	Hampshire controller HSA01 series
Power Requirements	DC + 5V +/- 5%
Power Consumption	< 2 mA @ 4V, 4MHz
Brown out Voltage	2.7V
Operation Temperature	-40°C to 85 °C
Storage Temperature	-65°C to 120°C
Interface	RS-232 mode: Bi-direction RS-232 serial communication 9600 (baud rate)
Resolution	True 10-bit (1,024 x 1,024) ratio metric analog to digital converter (1,048,576 points in the field)
Position Detection Speed	> 120 pts/sec (unfiltered points)
Pin out Definition	TOP,LEFT,BOTTOM,RIGHT
Green Product	RoHS

**Software Support:**

Drivers are available for Windows™ 9X, 2K, ME, XP, NT™, DOS™, Linux™, MAC and other operating systems and their variations.



<b>Spectrah Dynamics Inc.</b>		DESCRIPTION	Touch Panel controller	DATE	March 13 2007	APPROVED		Rev.	C
MODEL	THC-5641	SCALE	- / -	UNIT	mm.	DESIGN		Page	1 of 1
PART NO.						DRAWING		B-Page	of